

# Every year in New Zealand around 25 million native birds are killed by introduced predators



At Kiwicare we're on a mission to make New Zealand predator free by 2050 so that we can all enjoy our beautiful backyard for generations to come. And we're grateful to you for coming on this journey with us.

## Why we are working to control predators

	Prey on birds and their eggs	Compete for food source	Destroy native plants
Rats	✓	✓	✓
Mice	✓	✓	✓
Possoms	✓	✓	✓
Hedgehogs	✓	✓	✓

## Quick facts

- Every night in New Zealand approximately 68,000 native birds are killed by introduced predators.
- In New Zealand 4,000 native species are threatened or at risk of extinction.
- Possums are an all-round threat to our native birds. They love to feast on chicks and eggs damaging the habitat and putting food resources under pressure.
- Many native bird species are defenseless against rats and other introduced predators.
- Did you know, one hedgehog was found with 283 wētā legs in its stomach?



## Thanks for playing your part in making New Zealand predator free

The songs of native birds are one of the most iconic aspects of New Zealand nature, and our country wouldn't be the same without them.

With the Predator-Free Kit, you're helping make your backyard safe for wildlife. And that helps protect our wider backyard too.

We hope this information will help you get the most out of your Predator-Free Kit. For more details on the kit, and Kiwicare's Predator Free mission, go to [kiwicare.co.nz/predatorfree2050](http://kiwicare.co.nz/predatorfree2050) or scan the QR code.



All the best,

*The Kiwicare team.*



Kiwicare Corporation Limited,  
225 Maces Road,  
Christchurch, New Zealand  
Ph: 64 3 389 0778



W49100



# Let's keep the bird song going strong

## A Predator-Free NZ starts in your backyard



Hello there, congratulations!

You're helping to keep New Zealand's bird song going strong!

Did you know that introduced pests and predators threaten our native bird song and have resulted in New Zealand having the highest rate of threatened indigenous species in the world?

Fortunately, we can all do something about it. And this kit is the perfect place to start. Eradicating these predators will allow our native flora and fauna to flourish, and repair the damage to our ecosystem that they cause.

## The Kiwicare story



At Kiwicare, we're on a mission to make New Zealand predator free by 2050 to ensure our collective backyard is filled with birdsong. And to make New Zealand a better place to live.

Why? Because as animal and plant pest experts, we see ourselves as offering guardianship to our collective backyards and we're continuously striving to respect and conserve it.

By putting knowledge, insight and technical know-how at the heart of what we do, we've created safe, sustainable, effective solutions for removing the plant, insect and animal pests that invade our habitats and threaten our biodiversity, all while keeping our native species healthy and letting nature thrive.

Making New Zealand predator free starts one backyard at a time. And we're grateful you've chosen to use this kit in yours.

All the best,

*The Kiwicare team.*



## How to use the Kiwicare Predator-Free NZ Kit

Did you know that rodents are nocturnal? Generally, rats and mice aren't seen because they are active at night. So, most of us don't think we have a rat or mouse problem until the evidence becomes overwhelming. And by that stage, the situation becomes much more difficult to manage.

Fortunately, you can be proactive and protect your backyard before this happens. Buying a Predator-Free Kit is the perfect start. The products in this kit are most effective when used together. Here's a step-by-step guide.

### What's included in this kit



Victor Modified Rat Trap



NO Rats & Mice Eliminator Bait Blocks 100g



Predator-Free Discovery Kit 3 Pack



McGregor's Wildflower Bee Attracting Mix



Pegs to Secure Trapping Tunnel



Trap Tunnel

### Rodent Detection

#### Warning! Contains peanuts

Place a rodent detector card in your backyard where you think rodents might be active. These can be folded in half and nailed to a tree, or fence, or secured anywhere the card will stay in place.

The cards contain a peanut-based, non-toxic lure to attract rodents. If rodents are present, they'll chew on the cards leaving bite marks. The bite marks will help you identify what type of rodent it is. Make sure you monitor the card every few days to see if there has been any activity. Once you have confirmation of rat or mouse activity you can set up your bait station and/or traps in the right area. Use the pictures of bite marks provided in the kit to find out who's living in your backyard.

### Setting up your Trap Tunnel

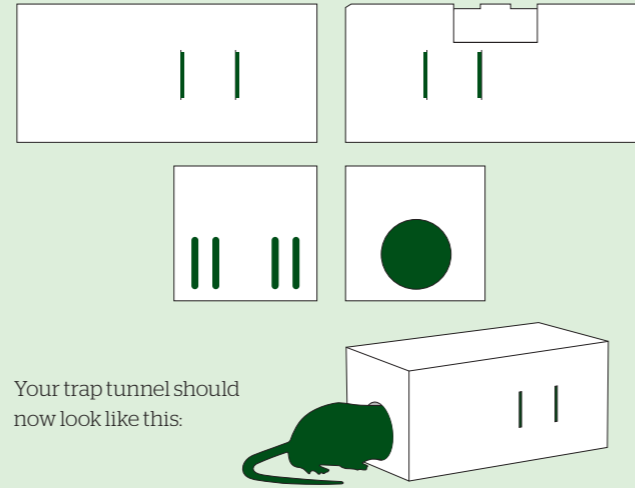
With very minimal effort, your Predator-Free Kit conveniently converts into a trap tunnel.

Trap tunnels are important to ensure non-target species are kept out, meaning only target species (e.g. rats and mice) will get in.

Rats and mice like to crawl into dark, enclosed spaces, making trap tunnels attractive as they are the perfect place to hide.

#### Step 1

Pop out all nine perforated cut-outs. Cut-outs will simply allow light and air in, encouraging the rodent to investigate.



Your trap tunnel should now look like this:

#### Step 2: Placing bait in the bait station

Baits must always be used in a bait station or trap tunnel. This keeps bait safe from pets and children and prevents weather from damaging your bait

It is important to wear gloves when setting your trap for your safety and to ensure no human scent is on the bait; otherwise rodents will be less likely to approach.

- Place one bait block in a plastic bag and **fix a peg through the bait bag and the base of the tunnel (securing the bait is very important)**. This will secure the bait to the tunnel to ensure a rodent simply nibbles on the bait and doesn't take the bait away with it. There are holes in the back corners of the trap tunnel that the pegs can be pierced through.
- Inspect bait at least every 7 days.
- Replace bait as necessary - it may take up to 2 weeks to control a significant rodent problem.

### IMPORTANT!

Ensure children, pets and other non-target animals are not harmed by access to toxic baits or traps. For safety, traps and toxic baits must only be placed where children, pets and non-target animals cannot access them, both in storage and in use. Read the instructions fully for safe use.

#### Step 3: Setting your trap and where to place it

The Victor Modified Rat Trap is an effective lightweight trap. It has a bait shroud that ensures rats interact with the trap and lure from the most effective direction and are despatched humanely. This trap meets the NZ Animal Humane standards (NAWAC). This means the trap has been tested for its humaneness to the animal, ensuring a quick, humane kill.

Rodents like to run along fences, walls and skirtings. So, setting a trap tunnel up against a wall, in particular, increases the chance of catching the rodent. Trap tunnels can be used both indoors and outdoors.

#### Here's how to set the trap:

- Wearing gloves, lift the white bait shroud, which is hinged at the front, to reveal the trigger spike. Add a lure to the trigger spike so that it is firmly in position; an easy and appealing lure is peanut butter.
- Replace the bait shroud. If present, remove the small staple that holds the setting pin in place before use (not the u staple at the rear of the trap).
- Move the setting pin back so it lies off the rear of the trap. With the trap on a firm surface, pull the kill bar back against the spring until it is flat along the rear of the trap. Keep fingers away from the front of the trap.
- While holding the kill bar down, carefully move the setting pin back over the kill bar and insert it in the notch in the rear of the lure trigger so that when the kill bar is released the setting pin holds the kill bar in place and the trigger is set.
- Keeping fingers out of the front kill zone of the trap gently place the trap in position. The traps should be set in the rear of trap tunnel to exclude non-target animals such as Weka.
- Ensure the lid of the trap tunnel is securely closed before placement.

#### Step 4: Checking and resetting your trap

Check your trap often (every few days).

- Once a rat has triggered the trap, you will need to carefully clear and reset the trap.
- Wearing gloves, carefully pull the kill bar back and dispose of the rat, being careful to keep fingers clear of the kill bar. The rat should be bagged and disposed of into a rubbish bin.
- Gently guide the kill bar down and wipe the trap and trapping tunnel clean with a damp cloth.
- Reset the trap by following instructions in Step 3.

### Don't forget about the bees

Bees play an essential role towards New Zealand's biodiversity because they are among the most effective pollinators of plants, including native plants such as pohutukawa and mānuka. Bees love variety. Planting a wildflower mix provides bees with a wide range of pollen and nectar-producing flower varieties for healthier, stronger, more disease resistant bees.

